

**SCARPA®**

**TECHNICAL INFORMATION SKI BOOT LINE  
FALL/WINTER 2020/2021**

## BOOTS SOLE LENGTH

MONDO BOOT SIZING	MAESTRALE XT	MAESTRALE RS GEA RS MAESTRALE GEA	FLASH MAGIC	F1 F1 WMN	ALIEN ALIEN 1.0	F1 LT	SHELL MARK	ALIEN 3.0
33								
32	348 mm.	348 mm.						
31	340 mm.	340 mm.	340 mm.	330 mm.		327 mm.	44	301 mm.
30	331 mm.	331 mm.	331 mm.	322 mm.	313 mm.	318 mm.	43	293 mm.
29	322 mm.	322 mm.	322 mm.	314 mm.	305 mm.	310 mm.	42	284 mm.
28	314 mm.	314 mm.	314 mm.	305 mm.	296 mm.	302 mm.	41	276 mm.
27	306 mm.	306 mm.	306 mm.	297 mm.	287 mm.	294 mm.	40	268 mm.
26	297 mm.	297 mm.	297 mm.	289 mm.	279 mm.	286 mm.	39	260 mm.
25	288 mm.	288 mm.	288 mm.	280 mm.	271 mm.	278 mm.		
24		280 mm.	280 mm.	272 mm.	262 mm.	270 mm.		
23		271 mm.	271 mm.	264 mm.	* optimized touring point - 7mm.	* optimized touring point - 1 mm.		* optimized touring point - 5mm.
22				256 mm.				

\* optimized touring point -  
6mm.

SHELL MARK	MONDO BOOT SIZING	T1 T1	TX COMP TX PRO TX PRO WMN	T2 ECO T2 ECO WMN T4
14	33			
13	32			359 mm.
12	31	351 mm.		351 mm.
11	30	343 mm.	333 mm.	342 mm.
10	29	335 mm.	325 mm.	334 mm.
9	28	327 mm.	316 mm.	325 mm.
8	27	318 mm.	307 mm.	317 mm.
7	26	309 mm.	299 mm.	309 mm.
6	25	300 mm.	291 mm.	299 mm.
5	24	292 mm.	283 mm.	291 mm.
4	23	283 mm.	275 mm.	284 mm.
3	22			277 mm.



BOOT SOLE LENGTH (mm)



\*Optimized Touring point

In order to maximize all efficiencies when moving uphill, some models with TLT fittings have moved the tech toe fittings further under the foot. This effectively makes for a more natural stride that offers significant energy savings - especially important on big days!

NOTE: binding mounting location is different than standard TLT mounting instructions.

MOUNTING INSTRUCTIONS: boot center to ski center

1. Mount the TLT heel piece in the standard mounting location

2. To mount the TLT toe piece: move the toe rearwards from 'standard' mounting location - towards the heel piece - by "X", the specified distance for each boot.

# RAMP ANGLE

The "ramp angle" refers to how much the heel is elevated above the toes in relation to the topsheet of the ski.



SIZE	SHELL	$\beta$
220	F1 EVO	6°
230	F1 EVO	6°
240	F1 EVO	6°
250	F1 EVO	5,5°
260	F1 EVO	5°
270	F1 EVO	5°
280	F1 EVO	5°
290	F1 EVO	5°
300	F1 EVO	3°
310	F1 EVO	3°

RANGE FOR THE STYLE 3°-6°  
FOR F1  
F1 Wmn

SIZE	SHELL	$\beta$
240	F1 LT	3,8°
250	F1 LT	3,8°
260	F1 LT	3,5°
270	F1 LT	3,5°
280	F1 LT	3,5°
290	F1 LT	3,2°
300	F1 LT	3,2°
310	F1 LT	3,2°

RANGE FOR THE STYLE 3,2°-3,8°  
FOR F1 LT

SIZE	SHELL	$\beta$
250	MAESTRALE	6,5°
260	MAESTRALE	6,3°
270	MAESTRALE	6,2°
280	MAESTRALE	6°
290	MAESTRALE	5,8°
300	MAESTRALE	5,7°
310	MAESTRALE	5,6°

RANGE FOR THE STYLE 5,6°-6,5°  
FOR Maestrle XT  
with ZEPPA XT

SIZE	SHELL	$\beta$
230	MAESTRALE	4,9°
240	MAESTRALE	4,6°
250	MAESTRALE	4,5°
260	MAESTRALE	4,3°
270	MAESTRALE	4,2°
280	MAESTRALE	4°
290	MAESTRALE	3,8°
300	MAESTRALE	3,7°
310	MAESTRALE	3,6°

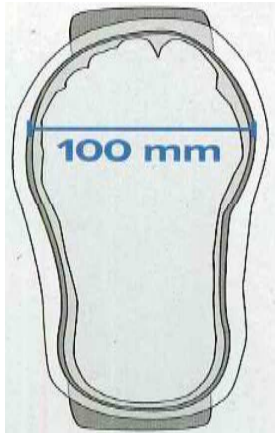
RANGE FOR THE STYLE 3,6°-4,9°  
FOR Maestrle RS  
Gea RS  
Maestrle  
Gea

SIZE	SHELL	$\beta$
230	MAESTRALE	4,9°
240	MAESTRALE	4,6°
250	MAESTRALE	4,5°
260	MAESTRALE	4,3°
270	MAESTRALE	4,2°
280	MAESTRALE	4°
290	MAESTRALE	3,8°
300	MAESTRALE	3,7°
310	MAESTRALE	3,6°

RANGE FOR THE STYLE 3,6°-4,9°  
FOR Flash  
Magic

# LAST WIDTH

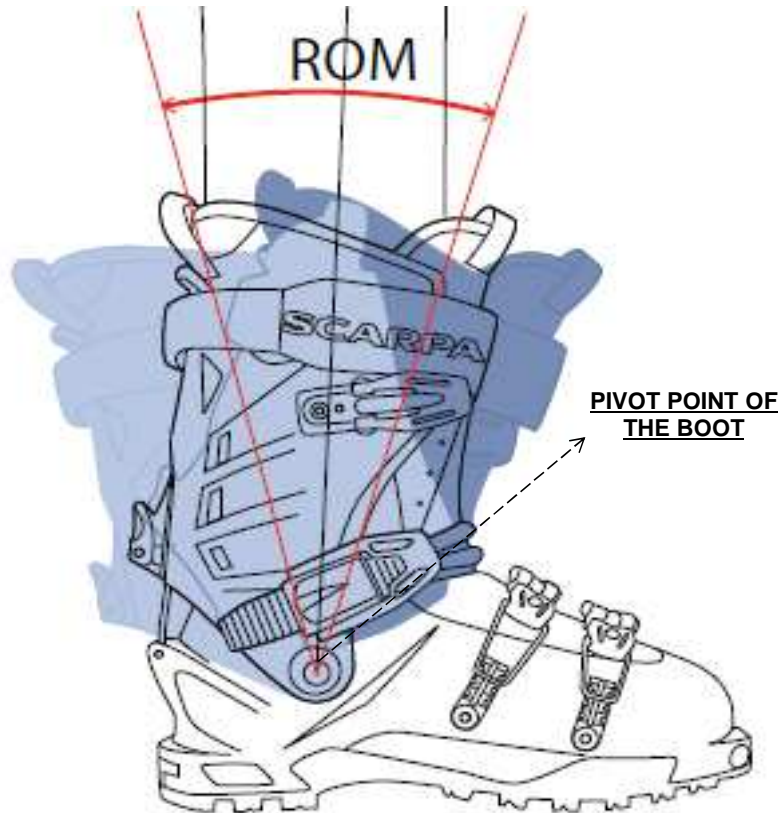
A ski boot's width refers to the measurement across the forefoot in a size 270



LAST	BOOT	WIDTH (mm.)
MAESTRALE	Maestrале XT - Maestrале RS - Gea RS - Maestrале Gea	101
MAESTRALE	Flash - Magic	101
<b>F1 Evo</b>	<b>F1 - F1 Wmn</b>	<b>102</b>
Alien 3.0	Alien 3.0	99
Alien	Alien - Alien 1.0	99
<b>F1 LT</b>	<b>F1 LT</b>	<b>100</b>
T1	T1	100
TX	TX Comp – TX Pro – TX Pro Wmn	102
T2	T2 Eco - T2 Eco Wmn - T4	102

# ROM

Range of Motion



**SCARPA ROM = total degrees forward and back compared to pivot point of the boot**

		FORWARD	BACKWARD
Maestrale XT	56°	10°	46°
Maestrale RS/Gea RS/Maestrale/Gea	60°	14°	46°
Flash/Magic	39°	15°	24°
Alien 3.0	76°	25°	51°
Alien 1.0	75°	25°	50°
Alien	72°	25°	47°
<b>F1 LT</b>	<b>72°</b>	25°	47°
<b>F1/F1 Wmn</b>	<b>62°</b>	25°	37°
T1/Tx Comp/Tx Pro/Tx Pro Wmn	22°	20°	2°
T2 Eco /T2 Eco Wmn	30°	24°	6°
T4	16°		

## FALL WINTER 2020/2021

Model	SKI WIDTH SUGGESTION
Gea	FROM 75 TO 95
Gea RS	FROM 85 TO 105
Magic	FROM 75 TO 95
Maestrale XT	FROM 95 TO 110
Maestrale	FROM 75 TO 95
Maestrale RS	FROM 85 TO 110
Flash	FROM 75 TO 95
F1 (M/W)	FROM 75 TO 95
F1 LT	FROM 65 TO 85 ***
Alien 1.0	AT SKI RACE
Alien	AT SKI RACE
Alien 3.0	AT SKI RACE

\*\*\* max weight ski + binding 1250/1300 gr.

**Any non-approved combinations could compromise the performance and durability of the boots and will void the warranty.**

<b>FALL WINTER 2020/2021</b>			
<b>Model</b>	<b>75 mm.</b>	<b>NTN</b>	<b>NTN Tech</b>
T1	Y	N	N
T2 Eco (M/W)	Y	N	N
T4	Y	N	N
TX Comp	N	Y	N
TX Pro (M/W)	N	Y	Y
		Freedom, Freeride, Outlaw	Meidjo, TTS, Lynx, Pure Tele
<p><b><u>“THE FOLLOWING CHART IS ADDRESSED TO PROFESSIONAL DISTRIBUTORS AND DEALERS ONLY</u></b> FOR THE PURPOSE OF HIGHLIGHTING CERTAIN INCOMPATIBILITIES ENCOUNTERED BETWEEN CERTAIN TELEMAR BINDINGS AND CERTAIN SCARPA BOOTS (THOSE COMBINATIONS OF PRODUCTS MARKED WITH THE “N” OF “NO”).</p>			
<p>PLEASE NOTE THAT WHERE A COMBINATION OF PRODUCTS IS MARKED WITH THE “Y” OF “YES”, IT MEANS THAT, BASED ON RESPECTIVE TECHNICAL DATA SHEETS, THERE ARE NO ABSTRACT REASONS FOR INCOMPATIBILITY BETWEEN THE TWO PRODUCTS TAKEN INTO CONSIDERATION. IT IS, HOWEVER, VERY IMPORTANT THAT YOU ALWAYS MAKE SURE THAT THE BOOT-BINDING ADJUSTMENT IS CARRIED OUT BY A SPECIALIST DEALER IN COMPLIANCE WITH THE SCARPA AND TELEMAR BINDING TECHNICAL MANUALS.”</p>			

## MARKER BINDINGS AND SCARPA BOOTS - FALL WINTER 2020/2021

Model	TOURING & ROYAL FAMILY	TOURING KINGPIN	TOURING	GRIPWALK
Gea	Y	Y	Y	N
Gea RS	Y	Y	Y	N
Magic	Y	Y	Y	N
Maestrale XT	Y	Y	Y	N
Maestrale	Y	Y	Y	N
Maestrale RS	Y	Y	Y	N
Flash	Y	Y	Y	N
F1 (M/W)	N	Y	Y	N
F1 LT	N	N	Y	N
Alien	N	N	Y	N
Alien 1.0	N	N	Y	N
Alien 3.0	N	N	Y	N
	DUKE PT16, DUKE PT12, BARON EPF13, JESTER 18 PRO ID, JESTER 16 ID, GRIFFON 13 ID, SQUIRE 11 ID, F12 TOUR EPF, F10 TOUR	KINGPIN M-WERKS 12, KINGPIN 10, KINGPIN 13, KINGPIN 10 DEMO, KINGPIN 13 DEMO	ALPINIST 12, ALPINIST 9, ALPINIST 8, ALPINIST 12 LONG TRAVEL, ALPINIST 9 LONG TRAVEL	XCOMP 16 & 12 GW, 12.0 TPX, 11.0 TP, 10.0 TP, FDT TPX 12, FDT TP 10, FDT TLT 10, GRIFFON 13D, GRIFFON 13TCX D, SQUIRE 11TCX D

**“THE FOLLOWING CHART IS ADDRESSED TO PROFESSIONAL DISTRIBUTORS AND DEALERS ONLY** FOR THE PURPOSE OF HIGHLIGHTING CERTAIN INCOMPATIBILITIES ENCOUNTERED BETWEEN CERTAIN MARKER BINDINGS AND CERTAIN SCARPA BOOTS (THOSE COMBINATIONS OF PRODUCTS MARKED WITH THE “N” OF “NO”).

PLEASE NOTE THAT WHERE A COMBINATION OF PRODUCTS IS MARKED WITH THE “Y” OF “YES”, IT MEANS THAT, BASED ON RESPECTIVE TECHNICAL DATA SHEETS, THERE ARE NO ABSTRACT REASONS FOR INCOMPATIBILITY BETWEEN THE TWO PRODUCTS TAKEN INTO CONSIDERATION. IT IS, HOWEVER, VERY IMPORTANT THAT YOU ALWAYS MAKE SURE THAT THE BOOT-BINDING ADJUSTMENT IS CARRIED OUT BY A SPECIALIST DEALER IN COMPLIANCE WITH THE SCARPA AND MARKER TECHNICAL MANUALS.”



## DYNAFIT BINDINGS AND SCARPA BOOTS - FALL WINTER 2020/2021

Model	P49	Low Tech Race (105/115)	Superlite (150/175 Z10 & Z12)	TLT Speed Z12 & TLT Speedfit Z10	TLT Expedition	TLT Speed Radical	TLT Speed Turn 2.0	ST Radical Turn & ST Radical	ST Rotation (7/10/12)
Gea	N	N	Y	Y	Y	Y	Y	Y	Y
Gea RS	N	N	Y	Y	Y	Y	Y	Y	Y
Magic	N	N	Y	Y	Y	Y	Y	Y	Y
Maestrale XT	N	N	Y	Y	Y	Y	Y	Y	Y
Maestrale	N	N	Y	Y	Y	Y	Y	Y	Y
Maestrale RS	N	N	Y	Y	Y	Y	Y	Y	Y
Flash	N	N	Y	Y	Y	Y	Y	Y	Y
F1 (M/W)	N	N	Y	Y	Y	Y	Y	Y	Y
F1 LT	N	Y	Y	Y	Y	Y	Y	Y	Y
Alien	N	Y	Y	Y	Y	Y	Y	Y	Y
Alien 1.0	N	Y	Y	Y	Y	Y	Y	Y	Y
Alien 3.0	N	Y	Y	Y	Y	Y	Y	Y	Y

**\*\* to be used without brake system**

**"THE FOLLOWING CHART IS ADDRESSED TO PROFESSIONAL DISTRIBUTORS AND DEALERS ONLY** FOR THE PURPOSE OF HIGHLIGHTING CERTAIN INCOMPATIBILITIES ENCOUNTERED BETWEEN CERTAIN DYNAFIT BINDINGS AND CERTAIN SCARPA BOOTS (THOSE COMBINATIONS OF PRODUCTS MARKED WITH THE "N" OF "NO").

PLEASE NOTE THAT WHERE A COMBINATION OF PRODUCTS IS MARKED WITH THE "Y" OF "YES", IT MEANS THAT, BASED ON RESPECTIVE TECHNICAL DATA SHEETS, THERE ARE NO ABSTRACT REASONS FOR INCOMPATIBILITY BETWEEN THE TWO PRODUCTS TAKEN INTO CONSIDERATION. IT IS, HOWEVER, VERY IMPORTANT THAT YOU ALWAYS MAKE SURE THAT THE BOOT-BINDING ADJUSTMENT IS CARRIED OUT BY A SPECIALIST DEALER IN COMPLIANCE WITH THE SCARPA AND DYNAFIT TECHNICAL MANUALS."

### ATK BINDINGS AND SCARPA BOOTS - FALL WINTER 2020/2021

Model	Revolution WC	SL WC	SL Lightweight WC	Trofeo	Trofeo Plus	Haute Route 10	Release 10	RT 8 10	RT	Crest 8 Crest 10	Crest 10 Rental	C-Raider 12	Raider 12	Freeraider 14	Front 12	Rent Me 12
Gea	N	N	N	N	Y	Y	Y	Y	Y	Y	Y	Y	Y	Y	Y	Y
Gea RS	N	N	N	N	Y	Y	Y	Y	Y	Y	Y	Y	Y	Y	Y	Y
Magic	N	N	N	N	Y	Y	Y	Y	Y	Y	Y	Y	Y	Y	Y	Y
Maestrale XT	N	N	N	N	Y	Y	Y	Y	Y	Y	Y	Y	Y	Y	Y	Y
Maestrale	N	N	N	N	Y	Y	Y	Y	Y	Y	Y	Y	Y	Y	Y	Y
Maestrale RS	N	N	N	N	Y	Y	Y	Y	Y	Y	Y	Y	Y	Y	Y	Y
Flash	N	N	N	N	Y	Y	Y	Y	Y	Y	Y	Y	Y	Y	Y	Y
F1 (M/W)	N	Y	Y	Y	Y	Y	Y	Y	Y	Y	Y	Y	Y	Y	Y	Y
F1 LT	Y	Y	Y	Y	Y	Y	Y	Y	Y	Y	Y	Y	Y	N	Y	Y
Alien	Y	Y	Y	Y	Y	Y	Y	Y	Y	Y	Y	N	N	N	N	N
Alien 1.0	Y	Y	Y	Y	Y	Y	Y	Y	Y	Y	Y	N	N	N	N	N
Alien 3.0	Y	Y	Y	Y	Y	Y	Y	Y	Y	Y	Y	N	N	N	N	N

\*\*\* make sure that the boot - binding adjustment is done accordingly to the SCARPA and ATK technical manual.

**“THE FOLLOWING CHART IS ADDRESSED TO PROFESSIONAL DISTRIBUTORS AND DEALERS ONLY** FOR THE PURPOSE OF HIGHLIGHTING CERTAIN INCOMPATIBILITIES ENCOUNTERED BETWEEN CERTAIN ATK BINDINGS AND CERTAIN SCARPA BOOTS (THOSE COMBINATIONS OF PRODUCTS MARKED WITH THE “N” OF “NO”).

PLEASE NOTE THAT WHERE A COMBINATION OF PRODUCTS IS MARKED WITH THE “Y” OF “YES”, IT MEANS THAT, BASED ON RESPECTIVE TECHNICAL DATA SHEETS, THERE ARE NO ABSTRACT REASONS FOR INCOMPATIBILITY BETWEEN THE TWO PRODUCTS TAKEN INTO CONSIDERATION. IT IS, HOWEVER, VERY IMPORTANT THAT YOU ALWAYS MAKE SURE THAT THE BOOT-BINDING ADJUSTMENT IS CARRIED OUT BY A SPECIALIST DEALER IN COMPLIANCE WITH THE SCARPA AND ATK TECHNICAL MANUALS.”

## FRITSCHI DIAMIR BINDINGS AND SCARPA BOOTS - FALL WINTER 2020/2021

Model	XENIC 10	SCOUT 11	VIPEC EVO 12	TECTON 12
Gea	Y	Y	Y	Y
Gea RS	Y	Y	Y	Y
Magic	Y	Y	Y	Y
Maestrale XT	Y	Y	Y	Y
Maestrale	Y	Y	Y	Y
Maestrale RS	Y	Y	Y	Y
Flash	Y	Y	Y	Y
F1 (M/W)	Y	N	Y	Y
F1 LT	Y	N	Y	Y
Alien	Y	N	N	N
Alien 1.0	Y	N	N	N
Alien 3.0	Y	N	N	N

**“THE FOLLOWING CHART IS ADDRESSED TO PROFESSIONAL DISTRIBUTORS AND DEALERS ONLY** FOR THE PURPOSE OF HIGHLIGHTING CERTAIN INCOMPATIBILITIES ENCOUNTERED BETWEEN CERTAIN DIAMIR BINDINGS AND CERTAIN SCARPA BOOTS (THOSE COMBINATIONS OF PRODUCTS MARKED WITH THE “N” OF “NO”).

PLEASE NOTE THAT WHERE A COMBINATION OF PRODUCTS IS MARKED WITH THE “Y” OF “YES”, IT MEANS THAT, BASED ON RESPECTIVE TECHNICAL DATA SHEETS, THERE ARE NO ABSTRACT REASONS FOR INCOMPATIBILITY BETWEEN THE TWO PRODUCTS TAKEN INTO CONSIDERATION. IT IS, HOWEVER, VERY IMPORTANT THAT YOU ALWAYS MAKE SURE THAT THE BOOT-BINDING ADJUSTMENT IS CARRIED OUT BY A SPECIALIST DEALER IN COMPLIANCE WITH THE SCARPA AND DIAMIR TECHNICAL MANUALS.”

**SALOMON BINDINGS AND SCARPA BOOTS - FALL WINTER 2020/2021**

<b>Model</b>	<b>MNC BACKCOUNTRY</b>	<b>TOURING</b>	<b>WTR FREERIDE - ALL MOUNTAIN</b>	<b>RESORT</b>
Gea	Y	Y	N	N
Gea RS	Y	Y	N	N
Magic	Y	Y	N	N
Maestrle XT	Y	Y	N	N
Maestrle	Y	Y	N	N
Maestrle RS	Y	Y	N	N
Flash	Y	Y	N	N
F1 (M/W)	N	Y	N	N
F1 LT	N	Y	N	N
Alien	N	Y	N	N
Alien 1.0	N	Y	N	N
Alien 3.0	N	Y	N	N
	S/LAB SHIFT MNC 13 & 10, GUARDIAN MNC 13, WARDEN MNC 13 & 11, WARDEN MNC 13&11 DEMO	MNT PURE, MNT TOUR	STH2 WTR 16 & 13, WARDEN 11, WARDEN 11 DEMO	X12 TL,Z12, Z10 TIW, Z10, L10

**“THE FOLLOWING CHART IS ADDRESSED TO PROFESSIONAL DISTRIBUTORS AND DEALERS ONLY** FOR THE PURPOSE OF HIGHLIGHTING CERTAIN INCOMPATIBILITIES ENCOUNTERED BETWEEN CERTAIN SALOMON BINDINGS AND CERTAIN SCARPA BOOTS (THOSE COMBINATIONS OF PRODUCTS MARKED WITH THE “N” OF “NO”).

PLEASE NOTE THAT WHERE A COMBINATION OF PRODUCTS IS MARKED WITH THE “Y” OF “YES”, IT MEANS THAT, BASED ON RESPECTIVE TECHNICAL DATA SHEETS, THERE ARE NO ABSTRACT REASONS FOR INCOMPATIBILITY BETWEEN THE TWO PRODUCTS TAKEN INTO CONSIDERATION. IT IS, HOWEVER, VERY IMPORTANT THAT YOU ALWAYS MAKE SURE THAT THE BOOT-BINDING ADJUSTMENT IS CARRIED OUT BY A SPECIALIST DEALER IN COMPLIANCE WITH THE SCARPA AND SALOMON TECHNICAL MANUALS.”

**ATOMIC BINDINGS AND SCARPA BOOTS - FALL WINTER 2020/2021**

<b>Model</b>	<b>MNC BACKCOUNTRY</b>	<b>TOURING</b>	<b>WTR FREERIDE - ALL MOUNTAIN</b>	<b>RESORT</b>
Gea	Y	Y	N	N
Gea RS	Y	Y	N	N
Magic	Y	Y	N	N
Maestrale XT	Y	Y	N	N
Maestrale	Y	Y	N	N
Maestrale RS	Y	Y	N	N
Flash	Y	Y	N	N
F1 (M/W)	N	Y	N	N
F1 LT	N	Y	N	N
Alien	N	Y	N	N
Alien 1.0	N	Y	N	N
Alien 3.0	N	Y	N	N
	SHIFT MNC 13, SHIFT MNC 10 WARDEN MNC 13&11 DEMO WARDEN MNC 13&11	BACKLAND TOUR, BACKLAND PURE	STH WTR 16&13 COLT 12 & 10	X20 EGA, X19 VAR & MOD, X16 VAR & MOD X12 VAR

**“THE FOLLOWING CHART IS ADDRESSED TO PROFESSIONAL DISTRIBUTORS AND DEALERS ONLY** FOR THE PURPOSE OF HIGHLIGHTING CERTAIN INCOMPATIBILITIES ENCOUNTERED BETWEEN CERTAIN ATOMIC BINDINGS AND CERTAIN SCARPA BOOTS (THOSE COMBINATIONS OF PRODUCTS MARKED WITH THE “N” OF “NO”).

PLEASE NOTE THAT WHERE A COMBINATION OF PRODUCTS IS MARKED WITH THE “Y” OF “YES”, IT MEANS THAT, BASED ON RESPECTIVE TECHNICAL DATA SHEETS, THERE ARE NO ABSTRACT REASONS FOR INCOMPATIBILITY BETWEEN THE TWO PRODUCTS TAKEN INTO CONSIDERATION. IT IS, HOWEVER, VERY IMPORTANT THAT YOU ALWAYS MAKE SURE THAT THE BOOT-BINDING ADJUSTMENT IS CARRIED OUT BY A SPECIALIST DEALER IN COMPLIANCE WITH THE SCARPA AND ATOMIC TECHNICAL MANUALS.”

**ARMADA BINDINGS AND SCARPA BOOTS - FALL WINTER 2020/2021**

<b>Model</b>	<b>MNC BACKCOUNTRY</b>	<b>TOURING</b>	<b>WTR FREERIDE - ALL MOUNTAIN</b>
Gea	Y	Y	N
Gea RS	Y	Y	N
Magic	Y	Y	N
Maestrале XT	Y	Y	N
Maestrале	Y	Y	N
Maestrале RS	Y	Y	N
Flash	Y	Y	N
<b>F1 (M/W)</b>	N	Y	N
<b>F1 LT</b>	N	Y	N
Alien	N	Y	N
Alien 1.0	N	Y	N
Alien 3.0	N	Y	N
	N SHIFT MNC 13, N SHIFT MNC 10 WARDEN MNC 13&11 DEMO WARDEN MNC 13&11	TRACER TOUR	STH <sup>2</sup> WTR 16&13, L10

**“THE FOLLOWING CHART IS ADDRESSED TO PROFESSIONAL DISTRIBUTORS AND DEALERS ONLY** FOR THE PURPOSE OF HIGHLIGHTING CERTAIN INCOMPATIBILITIES ENCOUNTERED BETWEEN CERTAIN ARMADA BINDINGS AND CERTAIN SCARPA BOOTS (THOSE COMBINATIONS OF PRODUCTS MARKED WITH THE “N” OF “NO”).

PLEASE NOTE THAT WHERE A COMBINATION OF PRODUCTS IS MARKED WITH THE “Y” OF “YES”, IT MEANS THAT, BASED ON RESPECTIVE TECHNICAL DATA SHEETS, THERE ARE NO ABSTRACT REASONS FOR INCOMPATIBILITY BETWEEN THE TWO PRODUCTS TAKEN INTO CONSIDERATION. IT IS, HOWEVER, VERY IMPORTANT THAT YOU ALWAYS MAKE SURE THAT THE BOOT-BINDING ADJUSTMENT IS CARRIED OUT BY A SPECIALIST DEALER IN COMPLIANCE WITH THE SCARPA AND ARMADA TECHNICAL MANUALS.”

**PLUM BINDINGS AND SCARPA BOOTS - FALL WINTER 2020/2021**

Model	R99	R120	R150	R170	R170 RENTAL	OAZO - OAZO 6	PIKA	GUIDE RENTAL	GUIDE 7 - GUIDE 12	GUIDE 7 RENTAL - GUIDE 12 RENTAL	SUMMIT 7	SUMMIT 12
Gea	N	N	N	N	N	Y	Y	Y	Y	Y	Y	Y
Gea RS	N	N	N	N	N	Y	Y	Y	Y	Y	Y	Y
Magic	N	N	N	N	N	Y	Y	Y	Y	Y	Y	Y
Maestrale XT	N	N	N	N	N	Y	Y	Y	Y	Y	Y	Y
Maestrale	N	N	N	N	N	Y	Y	Y	Y	Y	Y	Y
Maestrale RS	N	N	N	N	N	Y	Y	Y	Y	Y	Y	Y
Flash	N	N	N	N	N	Y	Y	Y	Y	Y	Y	Y
F1 (M/W)	N	N	Y	Y	Y	Y	Y	Y	Y	Y	Y	Y
F1 LT	Y	Y	Y	Y	Y	Y	Y	N	N	N	N	N
Alien	Y	Y	Y	Y	Y	Y	Y	N	N	N	N	N
Alien 1.0	Y	Y	Y	Y	Y	Y	Y	N	N	N	N	N
Alien 3.0	Y	Y	Y	Y	Y	Y	Y	N	N	N	N	N

NB: all SCARPA boots with TLT insert work properly with PLUM bindings. The chart above recommends the best combination boot binding in terms of performance and correct use.

**THE FOLLOWING CHART IS ADDRESSED TO PROFESSIONAL DISTRIBUTORS AND DEALERS ONLY** FOR THE PURPOSE OF HIGHLIGHTING CERTAIN INCOMPATIBILITIES ENCOUNTERED BETWEEN CERTAIN PLUM BINDINGS AND CERTAIN SCARPA BOOTS (THOSE COMBINATIONS OF PRODUCTS MARKED WITH THE "N" OF "NO").

PLEASE NOTE THAT WHERE A COMBINATION OF PRODUCTS IS MARKED WITH THE "Y" OF "YES", IT MEANS THAT, BASED ON RESPECTIVE TECHNICAL DATA SHEETS, THERE ARE NO ABSTRACT REASONS FOR INCOMPATIBILITY BETWEEN THE TWO PRODUCTS TAKEN INTO CONSIDERATION. IT IS, HOWEVER, VERY IMPORTANT THAT YOU ALWAYS MAKE SURE THAT THE BOOT-BINDING ADJUSTMENT IS CARRIED OUT BY A SPECIALIST DEALER IN COMPLIANCE WITH THE SCARPA AND PLUM TECHNICAL MANUALS."